

CB in Social Media and PIMEX Videos

Henri Heussen, PhD, senior consultant

Expert Centre for Chemical Risk Management

EU Conference “Perspectives of Control Banding”
21/22 June 2011, Dortmund, Germany



CB approach developed from perspective:

- **Traditional occupational health approaches were often too complicated for SMEs**
- **Without understanding the concept of risk assessment, SMEs were not challenged to act**

During last decade:

- **Much effort given to development and technical evaluation of CB tools**

However:

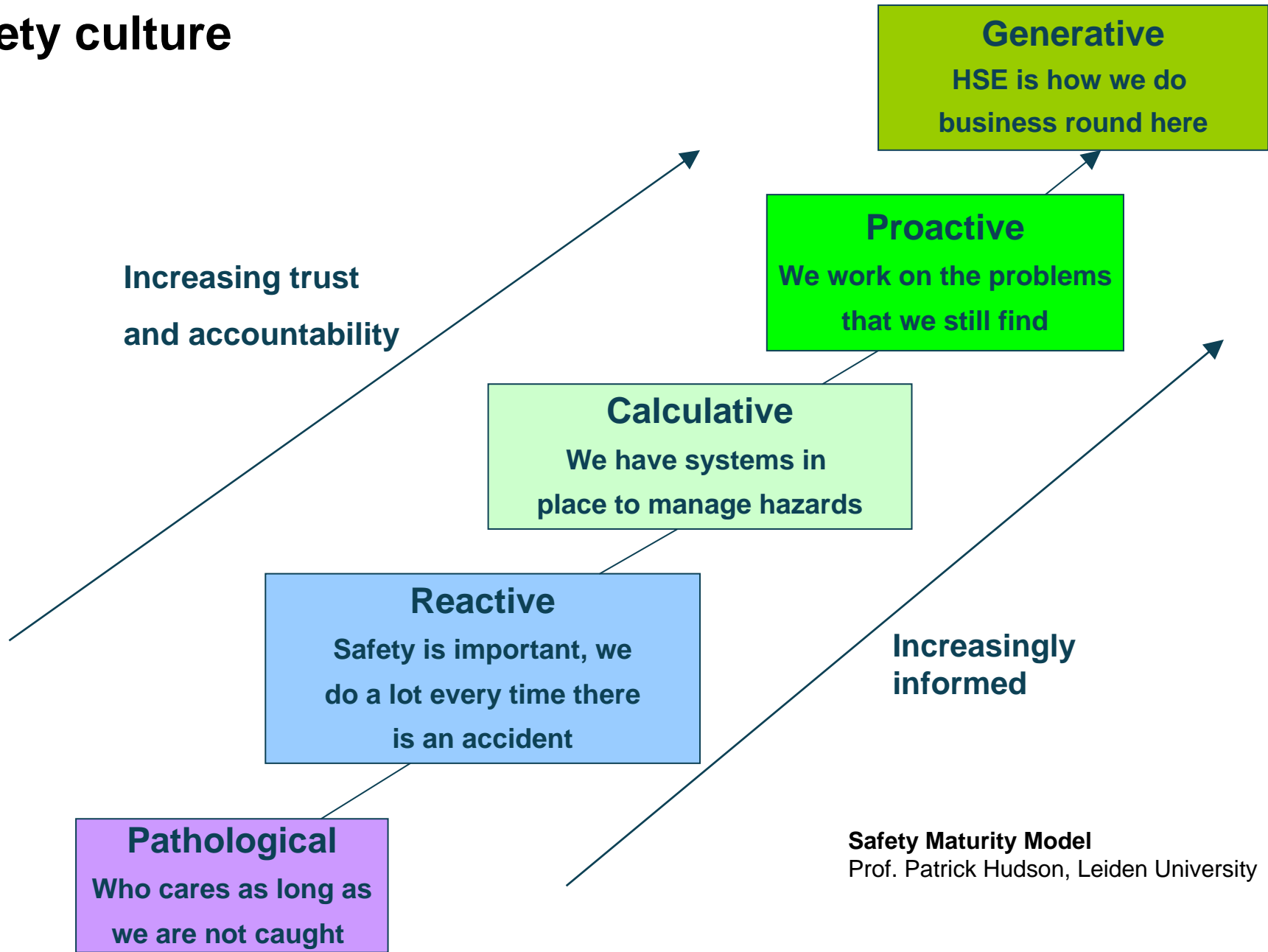
- **For a successful implementation more needs to be done!**

Lesson learned from almost 10 years of Stoffenmanager implementation



- **Human behaviour** is an implicit (even not always explicit) essential element of occupational hygiene practice
- You have to **do more** than just providing a tool on the internet
- You can **not copy** the **process of implementation** from one company to another
 - Tailormade
 - Safety culture
 - Good news: general principles!!

Safety culture



Safety Maturity Model
Prof. Patrick Hudson, Leiden University



**Safety culture will also
influence exposure**





General principles (1)

- **Personalisation** of the hazards and risks (BOHS newsletter, Feb 2011):
 - Make employers understand that exposure and ill-health is a serious risk at **their** workplace
 - Make employees believe that exposure and ill-health can happen to **them**

Only then they will act!

General principles (2)

- Risk communication:

- Not only a technical tool

- Self-assessment:

 increasing awareness: hazard x exposure = risk

Thus: Using a CB tool is by itself a personalisation step!!

General principles (3)

- In addition: **social media** may further strengthen the personalisation process
 - Highly accessible and scalable communication techniques
 - Transparant and interactive dialogue
 - Twitter, LinkedIn, YouTube
 - (examples)
 - Stoffenmanager's Community and Knowledge Portal



Stoffenmanager *community portal*


Stoffenmanager Nano module **Community portal**

U bent hier: **Homepage**

- Home
- Nieuws
- Activiteiten
- Beoordeel suggesties!
- Veel gestelde vragen
- Documentatie
- Source code
- Links









Community & kennis portal

Stoffen Twitter 

[Empty area for tweets]



Laatste nieuws

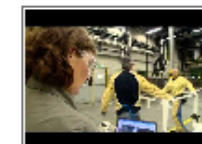
-  Staatssecretaris De Krom lanceert Stoffenmanager Nano 1.0
-  Lancering Stoffenmanager Nano
-  Roep uitvoeringsdiensten in het leven voor risicobedrijven
-  Staatssecretaris de Krom wil meer Arbocatalogi
-  Helft gecontroleerde dierenartsen werkt niet veilig
-  Zorg over controle op gevaarlijke stoffen

[meer nieuws >](#)

Veel gestelde vragen (FAQ)

1. Bevat de Stoffenmanager een database met product en componenten informatie?
2. Help! Ik ben de PGS Opslag en ATEX module kwijt
3. Welke route moet ik kiezen?
4. Zijn mijn uitgevoerde blootstellingsberekeningen veranderd t.o.v. eerdere versies van Stoffenmanager?

Recent op Youtube 



U bent hier: [Community & kennis portal](#) > **Beoordeel suggesties!**[Home](#)[Nieuws](#)[Activiteiten](#)[Beoordeel suggesties!](#)[Veel gestelde vragen](#)[Documentatie](#)[Source code](#)[Links](#)

Suggesties

Feature requests



Hieronder vindt u een overzicht van suggesties die door Stoffenmanager gebruikers zijn geopperd of op de groslijst staan van de initiatiefnemers. Dit overzicht zal geregeld worden bijgewerkt en aangevuld. Per suggestie kunt u aangeven wat u van deze suggestie vindt. Hoe hoger een suggestie wordt gewaardeerd, hoe hoger de kans dat deze wordt geïmplementeerd. [Suggestie](#) wilt doen kan dat natuurlijk ook altijd!

Ranking

Suggestie	Beschrijving	Waardering
Boomstructuur kunnen aanmaken	Stoffenmanager kent op dit moment geen hiërarchische gelaagdheid. Het...	(4 stemmen)
ABM code kunnen vastleggen	Om de waterbezwaarlijkheid van stoffen en preparaten te typeren,...	(6 stemmen)
Dupliceer functionaliteit bij producten	Soms hebben producten (bijna) dezelfde teksten die ingevoerd moeten...	(13 stemmen)
Stoffenmanager verrijken met databestand	Stoffenmanager wordt gevuld met stof- en productinformatie door de...	(11 stemmen)
Vragenlijst voor blootstellingsbeoordeling	Bij de beoordelingsmodellen moet per product een set van...	(6 stemmen)
Aantal karakters op de WIK	Bij het invoeren van de informatie voor de werkplek...	(4 stemmen)
Beoordeelde producten niet meer in gebruik	De suggestie is gedaan om beoordeelde producten, die niet...	(8 stemmen)
Creëren van een demoversie	Het creëren van een omgeving waarin een potentiële Stoffenmanager...	(6 stemmen)
Meerdere gebruikers binnen 1 organisatie	Op dit moment is het gebruik van	(17 stemmen)

General principles (4)

Visualisation = personalisation

“a picture paints a thousands words”

- **P**ixture **M**ix **E**xposure (PIMEX = Video Exposure Monitoring)



VEM and CB: partners in prevention

- VEM and CB useful tools
- VEM can be used in CB tools for risk **information**
- VEM directly at the workplace for risk **communication**
 - Exposed worker
 - Production/safety specialist
 - Technician
 - Expert occupational hygiene



VEM and CB: partners in prevention

- Future: VEM and **Control Guidance Sheets?**
 - Interactive paper?
 - Interactive MSDS?
 - examples



Active Areas and Virtual Page Layers

Figure 6.6 The five basic types of tail fins, the first four arranged in order of increasing aspect ratios. Many fish species have tail shapes that fall between these categories.

Some fish have fins that undulate (i.e. have a wave-like motion), which are used either as the main method of propulsion – as in the case of *eel* – or as an extra method in addition to movement of the tail. *Sharks* have a large pectoral fins, and rays propel themselves along by means of undulating wing-like fins along the margins of the fins (this can be seen best in the 'Shark and Ray' video). There are also some good examples of propulsion by undulating fins in the 'Coral Seas' video.

Figure 6.7 Examples of fish that use undulating fins for locomotion (the fins in question are shown in red). The fish are not shown to scale: sea horses are only centimetres long, while sunfish may be 4 m from fin tip to fin tip.



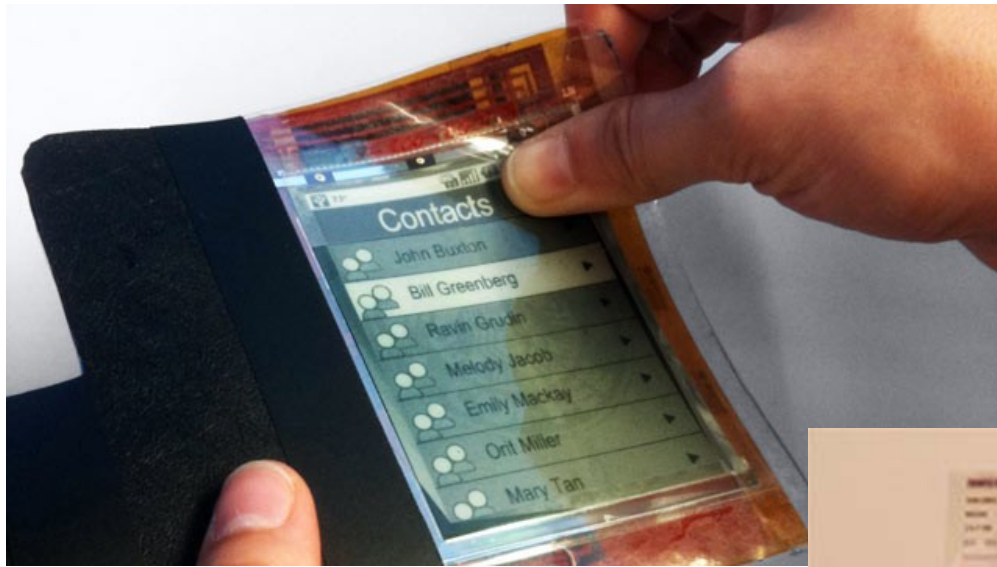
image



video clip



PaperPhone Flexible Smartphone Prototype, Responds To Touch And Bends



Interactive newspaper concept

<http://www.mobilemag.com/2010/04/19/the-page-e-ink-newspaper-concept-takes-e-reading-to-another-level/>



Summary

- **Development and technical evaluation of CB tools is not enough**
- **Successful implementation:**
 - **Human behaviour**
 - **You have to do more than just providing a tool on the internet!**
 - **Tailormade**
- **General principles:**
 - **Personalisation of the hazards and risks**
 - **Risk communication: using a CB tool is by itself a personalisation step**
 - **Social media strengthen this personalisation process**
 - **Also: Visualisation techniques (PIMEX)**
- **Future: VEM and interactive paper? (CGS, MSDS)**

Project team

- Karin Overdijk – marketing consultant (TNO)
- Petra Beurskens – senior occupational hygienist (Arbo Unie)
- Albert Hollander – senior research scientist/project manager (TNO)
- Michel van Wijk, senior IT consultant (BECO)

THANK YOU!

henri.heussen@arbounie.nl

[**www.ects.nl**](http://www.ects.nl)